

NOVASOL general characteristics

GENERAL CHARACTERISTICS

There are many different applications that a solar thermal system can offer: the energy captured from the sun mainly is used to heat sanitary water, houses, swimming pools and others.



The solar pump station NOVASOL is used in forced circulation solar systems (both high-flow and low-flow), as a correct management of the thermal fluid circulation is necessary.

All the components in the units are high-quality ones and ensure very good performances.

A 3-speed pump is supplied as standard, but upon request we can supply high-efficiency modulating pumps in order to reduce electric consumption.

The functions of the NOVASOL units are:

- Safety group with manometer;
- Supply and return valves with thermometer and check valve in the return valve;
- Flow-meter with filling-flushing taps.



Single line solar station NOVASOL mono series 6000

The single line unit Novasol mono series 6000 is a return line.

It is equipped with:

- Solar pump;
- Flow-meter
- Return valve with thermometer
- Safety group
- Possibility to accommodate an electronic controller.

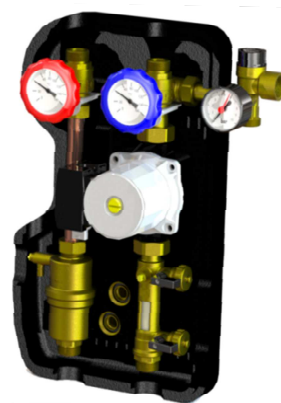


Twin line solar station NOVASOL duo series 6000

The twin line solar station Novasol Duo series 6000 has supply and return lines.

It is equipped with:

- Solar pump;
- Flow-meter;
- Supply and return valves with thermometer;
- Safety group;
- Airstop;
- Possibility to accommodate an electronic controller.

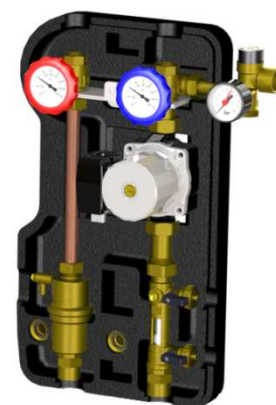


Twin line solar station NOVASOL duo series 7000

The twin line solar station Novasol Duo series 7000 has supply and return lines.

It is equipped with:

- Solar pump (possibility to have a modulating pump upon request);
- Flow-meter;
- Supply and return valves with thermometer;
- Safety group;
- Airstop;
- Possibility to accommodate an electronic controller.



Twin line solar station NOVASOL duo series 14000

The twin line solar station Novasol Duo series 14000 has supply and return lines.

It is equipped with:

- Solar pump;
- Flow-meter;
- Supply and return valves with thermometer;
- Safety group;
- Airstop.

